

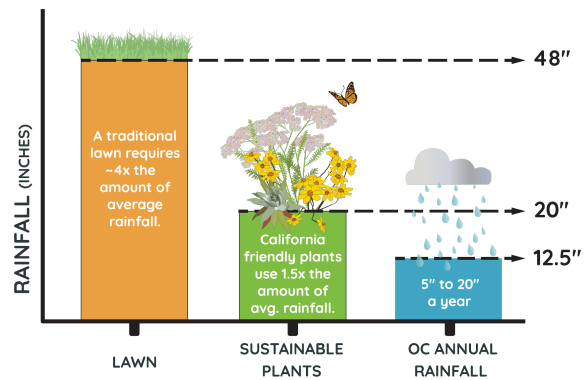
Water Districts Assist Customers to Unleash a Garden of their Dreams

Santa Margarita Water District (SMWD) provides drinking water, recycled water and wastewater services to over 200,000 customers in eight unique communities within South Orange County. The cities of San Juan Capistrano and Rancho Santa Margarita, parts of Mission Viejo and San Clemente, as well as all Coto De Caza, Ladera Ranch, Rancho Mission Viejo, and Las Flores are all included in our service area. Nearly all the drinking water we serve is imported from hundreds of miles away from northern California and the Colorado River.



With an eye on adapting to a hotter, drier future climate, Santa Margarita Water District encourages its customers to always think beyond the typical “front lawn”

when re-envisioning their landscapes. Currently, regional rebates from Metropolitan Water District and the Municipal Water District of Orange County supported by federal and state grants help us to put our money where our messaging is. Homeowners can participate in the Turf (Lawn) Removal Rebate Program and receive **\$3 per square foot** back if they install a California friendly landscape. This means no grass, no concrete, no invasive plants, and a bit of contouring to slow



down and capture water runoff. Find out more at www.SMWD.com/Rebates.

Along with incentives we provide inspiration for our customers’ new landscape projects with our Climate-friendly Garden Style Templates. California Native, Mediterranean, Home Orchard, Southwest, and

Meadow planting guides are available for free and can be found on our website at www.SMWD.com/Style. Unleash your inner designer with our curated garden styles, perfect for any taste and our Mediterranean climate.



Nothing is more exciting than seeing these garden styles in action at our ½ acre demonstration garden. The SMWD WaterWorks Garden is a living laboratory that explores efficient methods of irrigation, sustainable gardening practices, the latest drought tolerant plant varieties, and stylish permeable paving options. The

garden is located at our District headquarters at 26111 Antonio Parkway in Rancho Santa Margarita and is open to the public. If you can’t visit in person, take a virtual tour at www.SMWD.com/WaterWorks.

