

# Milo Baker Chapter California Native Plant Society

## Calendar

2/6	Ice Plant Removal
2/9	Ice Plant Removal
2/10	Redwood Hike
2/13	Rincon Ridge Weeds
2/15	Submissions deadline: March Newsletter
2/19	General Meeting
2/20	Ice Plant Removal
2/23	Salmon Creek Hike
2/24	Willow Creek Hike
2/27	Ice Plant Removal

## In This Issue

Calendar	1
General Meeting	1
Chapter News	2
General Meeting Cont.	3
Scholarship Awardees	4
Eco-Friendly Garden Tour	5
Horticulture Committee	6
Invasive Plant Committee	6
Events	7
Milo Baker Officers	9

**January General Meeting:** February 19, 2019 at 7:30 PM.

## Ancient Pines of the North Bay With Doshia Dodd and Breck Parkman

**Abstract:** As a result of the New Year's Eve Storm of 2005-2006, a paleobotanical discovery was made on the headwaters of Sonoma Creek that provides an important perspective on the forests of the Mayacamas Mountains during the Late Pleistocene. Numerous specimens of partially carbonized wood were recovered eroding from a deeply buried deposit. The deposit was 90cm thick and consisted of a blue clay. While most of the recovered specimens consisted of sections of limbs and twigs, over 100 small redwood and Douglas fir cones were recovered, as were six pine cones. Several of the pine cones are clearly *Pinus radiata* (Monterey pine), but the others appear to be possible hybrids, derived from a mingling of *Pinus radiata* and some other species, possibly *P. murricata* (bishop pine) or *P. attenuata* (knobcone pine). Hybrid KMX pines (knobcone and Monterey) have been reported in historic commercial forests. Efforts are underway to better identify the six pine cones. Radiocarbon dates derived from the deposit indicate that it spans the period 27,000-18,000 years ago and encompasses the Last Glacial

Maximum. The pine cones came from the lower part of the deposit, suggesting that they came from living trees that grew on site just before the start of the great warming event that brought an end to the Pleistocene. Fossil pine cones dating to the Late Pleistocene have been found in similar deposits on the Marin and Sonoma Coasts, but none had been reported from the interior until now. During the Last Glacial Maximum, these trees were about 60 miles inland from the coast. As the Pleistocene ended, the Monterey pine disappeared from the interior, its territory shrinking to what we know today. In this talk, the authors will discuss the fossil site, its discovery, and its significance in a world struggling with a changing climate.

Learn about our February speakers on page 2 and 3.

**Join us for Dinner before the January Meeting:** We'll gather for dinner at 5:45 pm at Kirin Restaurant, 2700 Yulupa Ave. We hope our speaker will join us, but we always have an enjoyable group of fellow members and a delicious Northern Chinese meal in any case. Please contact Liz Parsons at 833-2063 or lizpar8993@aol.com before noon on the day of the meeting, if you plan to attend.

**General Meetings are held at 7:30pm on the 3<sup>rd</sup> Tuesday of the month at Luther Burbank Art & Garden Center, 2050 Yulupa Ave, Santa Rosa.** Milo Baker Chapter Board meetings start at 7 pm, 2<sup>nd</sup> Tuesday nine months of the year, Environmental Center, 55 Ridgeway Ave, Ste A, Santa Rosa. **The next Board meeting is February 12th.** Anyone interested in the work of the chapter is welcome to attend!

---

---

## Chapter News

### A Message from our Chapter President

As I begin my tenure as the new chapter president I am overwhelmed with the range of projects and efforts we are involved with. We have so much to celebrate as well as exciting new projects to plan and implement. Betty Young directed a new shed onto the shade house grounds where valuable and secure storage will help in the march toward providing plants for this year's plant sales. While the shade house is not complete, it is already providing space to grow and store new shoots and seedlings. A small army of volunteers designed and built the space, from the ground up. Many of the same workers are now learning the propagation techniques required to grow enough to populate the sales. Also, we celebrate beginning a native garden project at the SRJC which will provide templates for residents to plan and install similar gardens at their homes. April Owens has taken this effort under control and is seeking more assistance in the field. Our invasive plant chair Jan Lochner doggedly drives volunteers to locations in the county, thinning Douglas fir out of oak stands, and pulling ice plant at Doran State Beach.

At my first board meeting in January we welcomed some new board members. Judith Rousseau has taken over books, t-shirts and posters from Cindy Tancreto. Ruthie Saia is our new field trip chair, and Michelle Karle will steward the Fountaingrove preserves. Cody Ender, a previous scholarship recipient is a new member-at-large. The board appreciates all the years that Cindy Tancreto, Lea Davis and Patty Mohar have been working on behalf of our local chapter. We hope we will continue to see them at our various activities!

I hope to showcase these and more of our chapter projects in future newsletters. As we start a new year, I hope that each of you feels

free to contact me with any thoughts and suggestions to improve our work. You can always contact me at [wsmitt8000@gmail.com](mailto:wsmitt8000@gmail.com) or call me 707 481-3765. We value our members and hope that we can reach you all during the year.

Any finally, I'd like to thank Leia Giambastiani and Sarah Gordon for their terms as co-presidents and ex-co-presidents. They have cheerfully kept the chapter organized and striving forward for the last 4 years. They will continue on the board, we won't let them go!

✂ Wendy Smit  
Milo Baker Chapter President

---

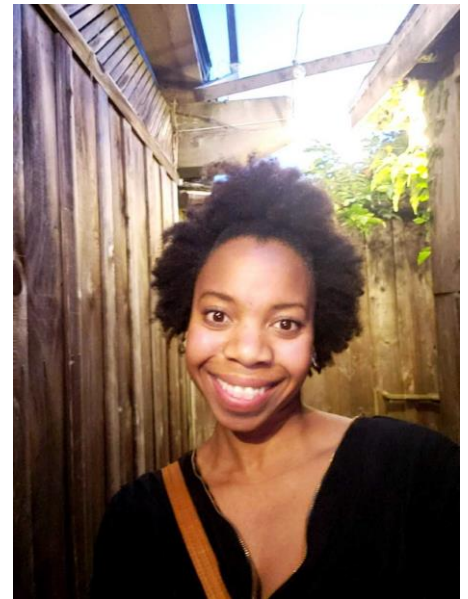
---

## General Meeting cont.

### February Speaker Biographies

Doshia Dodd is the Archaeological and Administrative Assistant at the Anthropological Studies Center at Sonoma State University. She earned her B.A. degree in Anthropology at Sonoma State University in 2016. She

specializes in archeobotany, paleoethnobotany, thus sorting and identifying botanical remains and managing the floatation system. Doshia grew up loving plants and learning about them with her father. One of his greatest gifts to her was growing up in a household where most of her medicine consisted of plants and other forms of natural medicine. Her past research included the interpretation of raspberry seeds from a nineteenth century privy and how they



relate to household beverage making and medicine. Doshia's initial goals of specializing in Northern California native medicinal plants has begun to shift towards residue analysis of bedrock milling features (BRM). This new research path has broadened the spectrum to not only medicinal plants but also plants used as subsistence and material culture. Her current research is geared toward starch residue analysis from bedrock mortars located in the Maidu Territory of Yuba County.



Breck Parkman is recently retired from almost 40 years as a Senior State Archaeologist in California. His research also took him to Kodiak Island, Alaska; the Canadian Plains; the South Coast of Peru; and Central Siberia, among other places.

Breck earned B.A. and M.A. degrees in Anthropology at CSU Hayward and was the founding Director of the UNESCO-sponsored Fort Ross ~ Global Village Project (1996-2000). He is also a former Research Associate at the University of California at Berkeley and a Past President of the Society for California Archaeology. Breck's research interests and publications range from Late Pleistocene environments to the archaeology of the Grateful Dead. He's given hundreds of press interviews both at home and abroad and has appeared in numerous films and documentaries on the History Channel, Discovery Channel, BBC, PBS, and Amazon Prime.

\*\*\*\*\*

## Next Month, Join the Milo Baker Chapter of CNPS for the our Six-Part General Meeting series:

In Our Own Backyards:  
The Joys and Benefits of Gardening with California's Diverse Native Plants



**March 19<sup>th</sup>:** Round table/panel discussion with experienced native plant specialists, including horticulturalists, landscape designers, and experienced native plant garden owners.

**Time:** 7:30 p.m.

**Location:** Luther Burbank Art and Garden Center, 3050 Yulupa Avenue, Santa Rosa, Ca.

Virginia Hotz-Steenhoven,  
Programs & Lectures Chair  
Education and Outreach Co-Chair

## General Meeting Plant Raffle

For 2019 general meetings, any member bringing a non-member to the meeting will receive an extra 5 raffle tickets! Ask when you sign in.



## Scholarship Awardees

The Milo Baker Chapter is proud to introduce our scholarship awardees for 2018/2019.



### Here are the Research Scholarship Awardees:

#### Wendy Herniman

Wendy Herniman has been a resident of Sonoma County since 2000 (formerly from the UK) and a steward at Pepperwood Preserve since 2012. She has been a student at the SRJC taking classes through the Natural Resources department and is currently following an online master's program in Biodiversity, Wildlife and Ecosystem Health with the University of Edinburgh, Scotland. Her dissertation project is concerned with the phenology, or seasonal changes, of California native oaks.

The CNPS award will fund all of the costs associated with the genetic sequencing of the

individual oak trees which I have been monitoring for the last 5 years to help me clarify the levels of hybridization between these oaks and also to analyze tree cores which I have collected to assess and compare the ages and growth rates of these trees.

#### Erika Sanders

I am an insatiably curious, life-long learner. Currently, I am pursuing a Master's degree in Environmental Science through a University of Idaho distance program. My Master's project is focused on *Leptosiphon jepsonii*, a charming rare annual that is only found in Lake, Sonoma, and Napa counties. The Milo Baker Chapter research grant will facilitate the process of surveying *L. jepsonii* at Pepperwood Preserve this spring through the use of a GPS device and mapping software.

### Here are the Merit Scholarship Awardees:

Chantel Rose Walker, Sonoma State University  
Cody Darling, Sonoma State University  
Zoe Minervini-Zick, Santa Rosa Junior College

Congratulations to our awardees!

Sean McNeal  
Conservation Chair

## Raise Funds for the Milo Baker Chapter while Grocery Shopping!

eScrip is a program where merchants donate a percentage (usually 3%) of your purchase to local schools and non profit organizations.

To register: go to [escrip.com](http://escrip.com), choose "Milo Baker-CA Native Plant Society" and complete the enrollment steps. This is an easy way to help support our chapter!



---

---

## *Eco-Friendly Garden Tour*

CNPS volunteers,

It's that time again for the Garden Tour. We hope you had fun before and want to help again. We need everyone's support to help inspire our neighbors about native gardening.

The Eco-Friendly Garden Tour is Saturday, May 4, 10am - 4pm. There will be two shifts: 9:30 to 1 and 1 to 4:30. The website is at [www.savingwaterpartnership.org/eco-friendly-garden-tour/](http://www.savingwaterpartnership.org/eco-friendly-garden-tour/). However, do not register yet. If you sign up to help, you will be sent a special link for volunteers.

The volunteer opportunities are as Garden Docent, Parker, Greeter, and Plant Sale Cashier. In addition, you can also volunteer to help groom and weed gardens before the tour.

We have lovely native gardens in Sonoma, Kenwood, Santa Rosa and Sebastopol this year. There will be a plant sale at the Laguna Environmental Center, like last year.

If you know someone that would like to help, please invite them. No qualifications needed for cashier, parking or weeding.

If you can participate the day of the tour, please send me an email at [martselb@sonic.net](mailto:martselb@sonic.net) or call me at (707) 538-9679 as soon as possible. Please answer the following questions:

1. What would you like to do this year? (Docent, Parker, Greeter or Cashier or any)
2. If you have a preference for area; Sonoma, Kenwood, Santa Rosa, Sebastopol. We will try to accommodate you.
3. Which shift would you prefer?
4. Do you have an Eco-Friendly t-shirt? If not, what size t-shirt should we order? (Womens: S, M, L or XL or Mens M, L, XL)

The weeding team never works more than 2 hours at a time. It's a great way to get a sneak peek at the gardens. If you can help with weeding, before the tour, contact Penny Dalton, [pdalton488@gmail.com](mailto:pdalton488@gmail.com) or 829-1586. Let her know:

1. Day of the week you could help; Monday afternoon, Tues morning, Thursday morning, Friday morning or afternoon.
2. If you have a preference, the city in which you would like help.

If you know of someone who you think might want to volunteer, please send me their contact information. (Committee member need not respond, unless t-shirt needed.)

Thanks so much for helping with this important event,

☞ Sandy Martensen  
Garden Tour Committee Secretary

---

---

## *Plant Sale Update*

### **Division Workshop**

We will hold our annual division workshop on Thursday, March 14, 1 pm to 4 pm. The workshop will be held at our new Laguna facility. Only those members who have been through the training with Betty Young can work in this facility. On Wednesday, March 13 at 10:30 am we will meet at Liz Parsons' garden to dig up the plants that we will use in the division workshop. These plants will be processed to make sure that they have no Phytophthora spores before we take them to our secure Laguna shade house. If you have any questions, call Liz at 833-2063.

☞ Liz Parsons  
Vice President

## Horticulture Committee

### SRJC Demonstration Gardens

We install beautiful California native landscapes - people come view them and pick one for their turf replacement garden - then freely download the planting and irrigation plan from the website. They can hand them to a landscaper or do it themselves. They are typical sized landscape gardens for front or back gardens with sustainable features such as: rain gardens, cisterns, swales, drip irrigation, etc...

This is a multi-agency project with students from the SRJC, the UC Master Gardeners, City of Santa Rosa, Sonoma Water and members of CNPS Milo Baker. And of course the .org I work for the Habitat Corridor Project. We will add more dates in the Spring for planting and irrigation.

Let Come help coordinate student volunteers, get a workout and drag some overgrown plants into the dumpsters to support this exciting new project at the Santa Rosa Junior College.

Let me know if you are interested in being more involved we need: donation coordinating, volunteer coordinating, social media, web page development... Help! :)

🦋 April Owens  
Horticulture Chair  
and  
proud Executive Director of the  
Habitat Corridor Project



## Invasive Plant Committee

### Weekly Ice Plant Removal

Wednesdays 9:30-11:30 PM

Doran Beach

Meet at Penny Dalton's house, 1201 Garden Lane, Sebastopol by 9:30. Return before 1 pm.

One of the most pleasant workdays happens every week - a trip to Doran Beach to pull ice plant. We are clearing out the ice plant that is in the marshland to make room for natives. It is very visual and quite satisfying, with the sound of the waves, birds and foghorn. To join us on a Wednesday, Please text Jan to let her know that you are coming: 707-569-4724.

We'll also meet **3 Saturdays from 10 am to 1 pm.**

**Feb. 9, March 9, April 6!**

Meet at Penny's 1201 Garden land half hour before to carpool OR meet at first parking lot on left after kiosk across from the walking path.

Also in the works is a day at the **Kenwood Marsh.** So enjoy the rain for now and hope to see you soon!

🦋 Jan  
Lochner,  
Invasive  
Plants Chair



## Rincon Ridge Park Work Party

Wednesday, February 13, 2019 9:00 AM

Rincon Ridge Park, at the corner of Fountaingrove Parkway and Sedgemoore Dr.

Leader: Greg Wahlert; cell phone (805) 294-8685

Rincon Ridge Park harbors two rare species, Rincon ceanothus (*Ceanothus confusus*) and Rincon manzanita (*Arctostaphylos stanfordiana* subsp. *decumbens*). The rare plant area in the park burned in the Tubbs Fire, but as would be expected for chaparral plants, they are recovering beautifully! However, the rare plant area faces several threats from the rebuilding efforts in the area.

Our main goal will be to thin the native perennial vegetation that is resprouting in the sensitive plant area. The reason for thinning the native competitors, particularly live oak, madrone, and bay, is to promote the regeneration of young manzanita and ceanothus germinating from the soil seed bank. Thinning will have the added benefit of promoting our conservation goals that can clash with the homeowners' objectives, which seem to result in aggressive actions to suppress all native vegetation in the area.

The work party will be rain or shine, and I'll stoke our efforts with coffee and bagels. Wear pants, long sleeved-shirts, gloves and sturdy shoes, there's poison oak on the site. I would be grateful if you could also bring tools to the work party (loppers and clippers).

Having served as the Milo Baker Chapter's steward for this preserve from 1990 to ca. 2000, it will be wonderful to be back on the site working to conserve these rare species with friends new and old from the chapter. The regeneration of the rare ceanothus and manzanita is perhaps the only good thing that resulted from the catastrophe. The young seedlings are highly vulnerable to disturbance

at this stage, yet we can do a lot to put the area back on a trajectory to healthy ecological recovery.

☞ Greg Wahlert  
Cheadle Center for Biodiversity and Ecological Restoration  
University California, Santa Barbara

## Events

### Redwood Hike

Armstrong Redwoods State Park

Sunday, February 10, 2019

10:00 AM – 2:30 PM

Ann Howald, retired botanist, will lead us through the misty glades of the old-growth redwood forest to search for early-blooming slinkpods, aka fetid adder's tongue (*Scoliopus bigelovii*), and other denizens of the dark woods. Then we'll venture up into the sun-dappled slopes of oak woodland, checking to see whether the long gray-green strands of Old Man's Beard (*Dolichousnea (=Usnea) longissima*) are still festooning the tall trees in the canyon below the road. Bring lunch, with tea or hot chocolate recommended for your thermos. Dress in layers, and bring warm gloves, hat and scarf. Easy to moderate hike, with some elevation gain. We'll assemble in the (free) parking lot outside the gate and walk in. Heavy rain cancels.

Please Carpool! Carpool from Sebastopol Safeway parking lot. Meet Ruthie at 9:15, leaving at 9:30. Look for Green Toyota truck. 707-322-7462

Ann's cell phone: 707-721-6120 (likely doesn't work at Armstrong Woods, though)



*Scoliopus bigelovii*, fetid adder's tongue

## Early Spring Flowering Shrubs and Herbs

along Sonoma County Creeks  
Saturday, Feb. 23 and Sunday, Feb. 24  
10 AM to 1 PM  
Leader: Peter Warner

### Saturday, Feb 23<sup>rd</sup>, Salmon Creek

The walk along Salmon Creek Rd. west of Bodega has been popular in the past, a relaxed stroll to look for several early-flowering native shrubs along this quiet rural road and adjacent Salmon Creek. Of special interest is the northernmost documented population of western leatherwood, *Dirca occidentalis*, and we should also see flowering currants, twinberry, willows, oso berry, irises, milk maids, and other reminders of the approaching bounty of spring color.

Meet at 10a.m. at the junction of Salmon Creek Rd. and Fitzpatrick Lane, about 2.4 miles west of the village of Bodega at Bodega Hwy. Parking is very limited at this location, so ride-sharing is strongly recommended. Please respect local residents who drive along this road, and wear bright clothing for the sake of visibility while we're walking.

Carpools West County, Leave 9:30 meet Ruthie at Sebastopol Luckys parking lot.

### Sunday February 24<sup>th</sup>, Willow Creek

This is another road walk: lower Willow Creek Rd. (part of Sonoma Coast State Park), to look further at coastal wetlands, woodlands, and scrub and early-flowering plants. please share rides. The walking pace may be more brisk than Saturday's, so that we can cover a few miles along the road. Expect a 5-mile walk, and be prepared for occasional big puddles along the road. Take 116 River road to Hwy 1 south turn Left on Willow creek after Russian House Restaurant We'll assemble in the vicinity of the 2<sup>nd</sup> bridge along this road, about 1 1/2 miles east of Hwy. 1 along Willow Creek Rd. (just before the first bridge) and walk from there, perhaps as far as the closed Pomo Canyon campground. Parking is somewhat limited at this particular site, but available a short walk from the bridge closer to Hwy. 1

Carpool West County, Leave 9:30 meet Ruthie at Forestville Commuter Parking Mirabel & River Santa Rosa, Leave 9:15 meet .tba. at 101 & River rd at the power station park and ride.

You can call Peter about trip details at (707) 666-9071 or email: [phytopagan AT sonic.net](mailto:phytopagan@sonic.net).

## Rare Plant Monitoring

in Trione-Annadel State Park  
Thursday, March 21, 2019  
9 AM to 4 PM

Rain date: Monday, Mar. 25, same time.

Meet by 9 a.m. at Parktrail Drive & Comfrey Place, Santa Rosa, ~ 1/2 mile east of Summerfield Rd. - N end of Vietnam Veterans Trail.

This trip will focus on rare plant monitoring and mapping; all attending will have the opportunity to participate. Our long walk will take us to several sub-populations of *Fritillaria liliacea* (fragrant fritillary) in the northwestern part of Trione-Annadel State Park. Expect up to 7 miles at a moderate pace, with lengthy stops to find, count, map, and document the plants and their local ecology. Plan for lots of time off-trail, on rough, rocky, sometimes wet ground (but no direct exposure to poison-oak!). Lunch, snacks, water, sunscreen, and cameras strongly recommended. GPS receivers, clipboards, notebooks useful & optional.

Participation limited. RSVP: contact Peter Warner [phytopagan@sonic.net](mailto:phytopagan@sonic.net) or (707) 666-9071 or Amy Patten [mailto:apatten@cnps.org](mailto:mailto:apatten@cnps.org)

West county carpool, Ruthie Leaving 8:30 from Luckys parking lot in Sebastopol

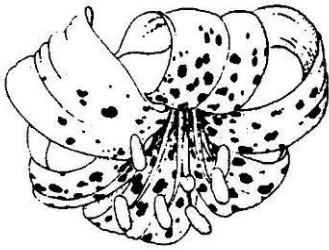
## **Save the Dates**

2/10/19 Armstrong Woods / Ann Howald  
2/23/19 Salmon Creek/ Peter Warner  
2/24/19 Willow Creek/ Peter Warner  
3/17/19 Fairfield Osborn Preserve/ Kate Symonds  
3/21/19 Trione Annadel/ Peter Warner  
3/24/19 Fitch Mountain/ Kate Symonds  
4/14/19 Hood Mountain/ Peter Warner  
4/25/19 Sonoma Horticulture Nursery/ Mike Boss  
4/29/19 Stump Beach/ Ann Howald  
5/11/19 Mayacamas Preserve/ Michelle Cooper  
TBA Jepsen Prairie/ Doug Wirtz  
10/5/19 SRJC Natives Landscapes/ April Owens

📍 Ruthie Saia  
Field Trip Coordinator  
707-322-7462







# CALIFORNIA NATIVE PLANT SOCIETY

Milo Baker Chapter      milobaker.cnps.org  
PO Box 892  
Santa Rosa, CA 95402

NON-PROFIT ORGANIZATION  
U.S. Postage Paid  
Santa Rosa, CA  
Permit #470

*Lilium pardalinum ssp. pitkinense*  
Pitkin lily

## Newsletter & Web Site Info:

Send newsletter submissions to:  
Editor, cnpsmbnewsletter@yahoo.com  
Deadline for inclusion in the March  
Newsletter is February 15th.  
The chapter website milobaker.cnps.org  
contains a wealth of information plus  
current and archived newsletters.  
For newsletter mailing/membership issues,  
contact: cnpsmbmembership@gmail.com

### Milo Baker Chapter Officers & Board of Directors 2017/2018

President:	Wendy Smit	707-481-3765, wsmit8000@gmail.com
Past President:	Leia Giambastiani	707-322-6722, leiagia@gmail.com
Vice President:	Liz Parsons	707-833-2063, lizpar8993@aol.com
Secretary:	Kerry Wininger	707-888-5616, kerrywininger@gmail.com
Treasurer:	Jim Piercy	707-539-3441, terrapenecarolinamajor@yahoo.com
Conservation Chair:	Sean McNeil	707-480-2965, seanmcneil0@gmail.com
Cunningham Marsh:	Marcia Johnson	owlsnesttwo@att.net
Director at Large:	Penny Dalton	
Director at Large:	Cody Ender	codyender@gmail.com
Director at Large:	OPEN	
Field Trips:	Ruthie Saia	707-322-7463, ruthiegardengirl@gmail.com
Horticulture Chair:	April Owens	707-331-2070, aprilleeowens@gmail.com
Hospitality:	Becky Montgomery	707-573-0103, montyb@sonic.net
Hospitality:	Liz Parsons	707-833-2063, lizpar8993@aol.com
Invasive Plant Chair:	Jan Lochner	707-569-4724, 4lochs@comcast.net
Membership:	Susan Dean	cnpsmbmembership@gmail.com
Newsletter Editor:	Caprice Disbrow	707-322-5119, cnpsmbnewsletter@yahoo.com
Outreach Co-Chair:	Virginia Hotz-Steenhoven,	707-528-6030 vsteenhoven@sonic.net
Plant Sale:	Liz Parsons	707-833-2063, lizpar8993@aol.com
Programs/Lectures:	Virginia Hotz-Steenhoven,	vsteenhoven@sonic.net
Plant Nursery Chair	Betty Young	707-595-1463, youngb0721@msn.com
Publicity:	OPEN	
Rincon Ridge Park:	Michelle Karle	michelle_karle@hotmail.com
Sales Chair:	Judith Rousseau	707-326-6454, jrousseau12@hotmail.com
SCCC Rep.:	Wendy Krupnick	707-544-4582, wlk@sonic.net
Southridge Preserve:	Michelle Karle	michelle_karle@hotmail.com
SRJC Rep.:	OPEN	
SSU Rep.:	OPEN	
Web Site:	Molly Levitt	cnpsmb.webadm@gmail.com
Vine Hill Preserve:	Sarah Gordon	707-833-1243, sarahpgordon@gmail.com

### We invite you to join CNPS

Name \_\_\_\_\_

Address \_\_\_\_\_

City/Zip \_\_\_\_\_

Phone \_\_\_\_\_

Email \_\_\_\_\_

Chapter affiliation:

Milo Baker (Sonoma County)

Other county \_\_\_\_\_

Membership category:

Student or Limited Income..... \$25

Individual.....\$45

Family, Group or Library.....\$75

Plant Lover.....\$100

Patron.....\$300

Benefactor.....\$600

Mariposa Lily.....\$1500

New Member     Renewal

Make check payable to CNPS and mail to:  
CNPS, 2707 K Street, Sacramento, CA 95816

To pay by credit card or for more info call  
(916) 447.2677 or visit www.cnps.org