

Guide to Liverworts of Oregon: *Lophozia obtusa* (Lindb.) Evans

David H. Wagner
Northwest Botanical Institute
PO BOX 30064
Eugene, OR 97403

Synonyms: *Schistochilopsis obtusa* (Lindb.) Potemkin; *Obtusifolium obtusum* (Lindb.) S.W. Arnell

Special Status: None; recommend search in subalpine habitats to review occurrence.

Recognition: Characterized by bilobed leaves with rounded lobes, a feature shared with *Gymnocolea inflata*. However, this species has a pale green color contrasted with the dark brown coloration typical of *Gymnocolea inflata*. Examination of leaf cells of living plants is definitive when the numerous, small (smaller than chloroplasts), uniglobular, colorless, oil bodies are seen.

Distribution: Circumboreal. On peaty soil or rocks; at high elevations in the mountains. Known from Lane County, Oregon and recently found for the first time in California. Apparently more abundant northward, it is widespread in Eurasia (Stotler & Crandall-Stotler 2017).

Comments: Stotler and Crandall-Stotler (2017) recommended using *Obtusifolium obtusum* (Lindb.) S.W. Arnell as the accepted name for this species, in part because of its complicated taxonomic history. In this work a more traditional name is preferred for use in keys based on morphology. Also, it follows the treatment in Flora of North America (Bakalin 2011).

Despite being a characteristic feature of species in *Lophozia* subgenus *Massula* as defined by Schuster (1969), underleaves are difficult to demonstrate on *L. obtusa*. Paton (1999) mentions that underleaves are often absent, which is the situation in the California specimen illustrated below.



Lophozia obtusa - Female shoot. Russian Wilderness, Siskiyou County, California. Lenz 3014, CAS.



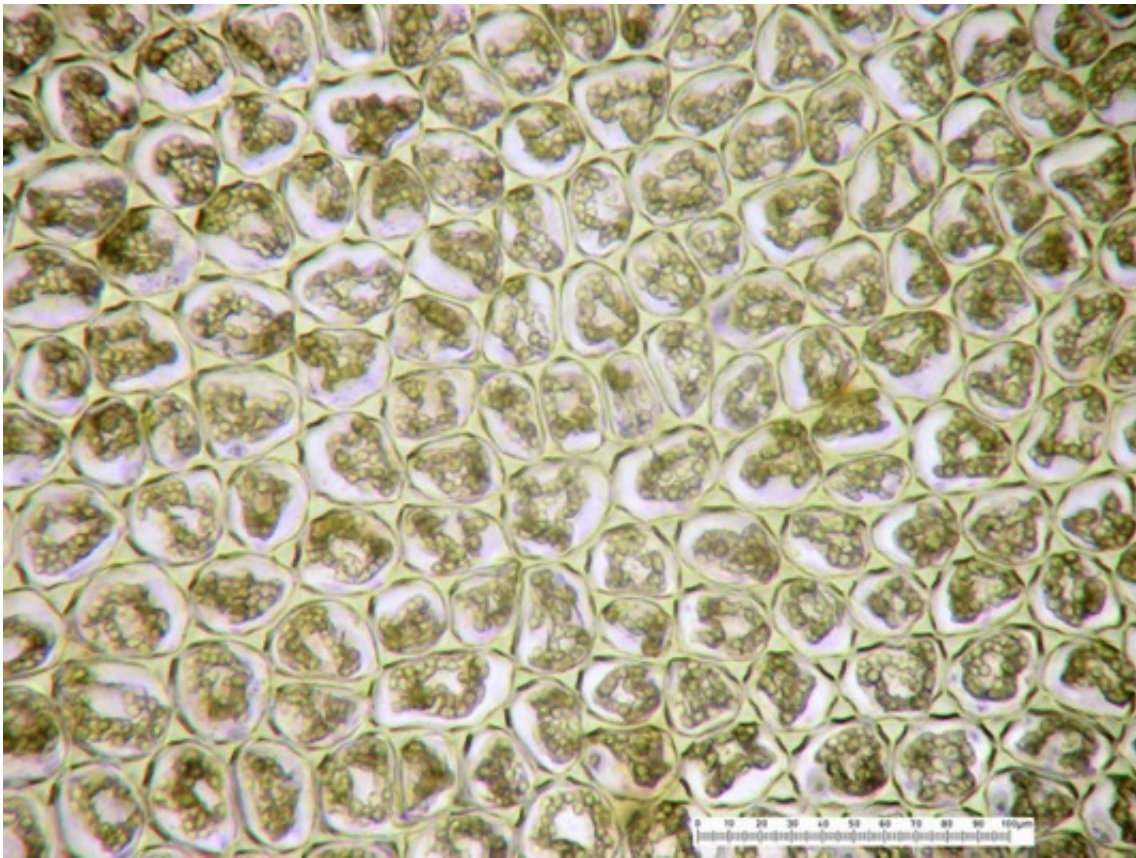
Lophozia obtusa - Female shoot. Russian Wilderness, Siskiyou County, California. Lenz 3014, CAS.



Lophozia obtusa -
Whole shoots.
Russian
Wilderness,
Siskiyou County,
California. Lenz
3014, CAS.



Lophozia obtusa - Leaf.
Russian Wilderness,
Siskiyou County, California.
Lenz 3014, CAS.



Lophozia obtusa -
Midleaf cells.
Russian
Wilderness,
Siskiyou
County,
California.
Lenz 3014,
CAS.

Literature Cited

Bakalin, V. 2011.

Lophozia. Bryophyte Flora of North America, Provisional Publication. [Flora of North America vol. 29](#). Accessed September 13, 2020.

Stotler, R. and B. Crandall-Stotler. 2017.

A Synopsis of the Liverwort Flora of North America North of Mexico. *Ann. Missouri Bot. Gard.* 102: 574-709.

xmlns:cc="http://creativecommons.org/ns#" >This work is licensed under

[CC BY-NC 4.0](#)